

Barrier-free Facilities in The Hub

Currently, barrier-free facilities provided in The Hub include:

- Accessible lifts (*Photo 1*);
- Accessible and visible display lift control screen (*Photo 2*);
- Braille and tactile markings on lift control buttons (*Photo 3*);
- Accessible toilets with emergency call bell (*Photos 4a & 4b*);
- Accessible carpark space (*Photo 5*);
- Accessible entrance/exit from/to carpark (*Photo 6*);
- Visual fire alarms (*Photo 7*); and
- Temporary refuge space for wheelchair (*Photo 8*).

(1)



(2)



(3)



(4a)



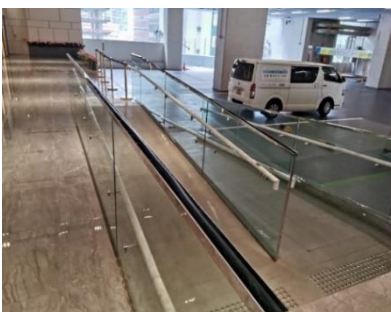
(4b)



(5)



(6)



(7)



(8)

